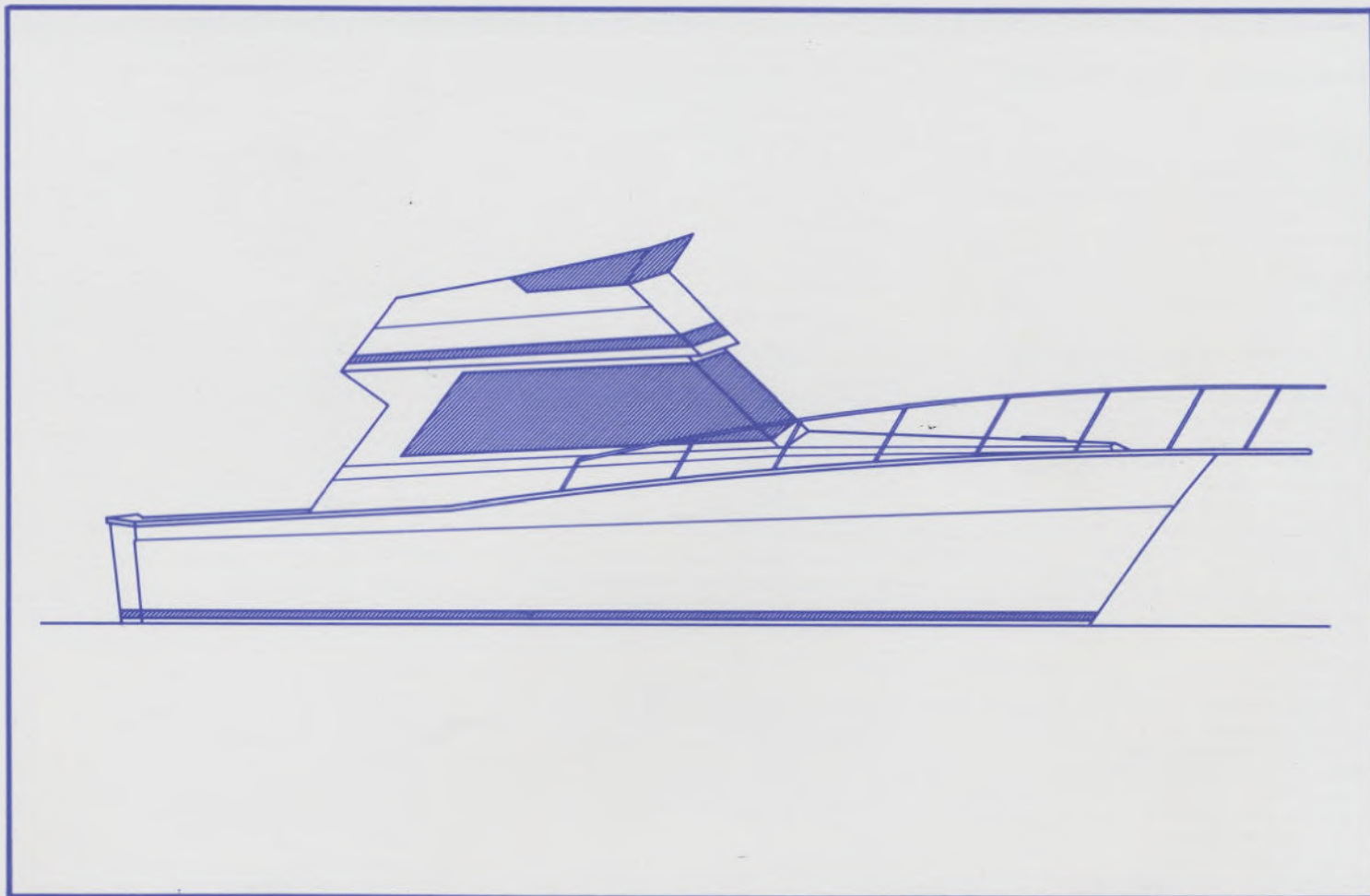


viking yachts



EFFECTIVE ON DELIVERIES
JANUARY 1, '88 THRU JULY 31, '88
PRICES SUBJECT TO CHANGE
WITHOUT NOTICE

viking 35' convertible specifications

35' CONVERTIBLE SPECIFICATIONS'''

Length, overall (L.O.A.)	35'0"	10.67 meters	Freeboard, bow	5'4"	<u>1</u> .93 meters
Length, overall (including Bow Pulpit)	38'6"	11.58 meters	Freeboard, stern	3'2"	<u>1</u> .10 meters
Waterline length (L.O.W.)	33'2"	<u>9</u> .91 meters	Height, waterline to top of flybridge windshield	-12'4"	<u>3</u> .76 meters
Beam	131"	3.99 meters	Gross Weight, approx. ^(D)	20,000 pounds	9,117.00 kilos
Draft	4'1"	<u>1</u> .25 meters	Fuel Capacity ⁽⁸⁾	300 gallons	1,135.00 liters
Dead rise (Transom)	15.5 °	15.5 °	Water Capacity ^(B)	75 gallons	284.00 liters

STANDARD EQUIPMENT

CONSTRUCTION

- Hand laid-up, molded fiberglass hull, deck, deckhouse & flybridge w/ind-grain balsa core in hull aides, decks & cabin top
- Solid keel, strokes and chines

MECHANICAL

- Acoustical and thermal insulation
- Bilge pumps (3)
- Dockside water connection w/pressure reducing valve
- Engine alarm system, audible
- Engine room blowers
- External sea strainers
- Freshwater fill hose, engines and generator
- Fuel lines, flexible aircraft type
- Fuel tank, reinforced fiberglass
- Fuel/Water separator filters
- FWC, propulsion engines, generator
- Halon fire protection system, automatic & manual
- Holding tank w/dockside & overboard pumpout
- Hot water heater
- Hour meters
- Hydraulic **steering**
- Mufflers, engines and generator
- Propellers, Nibral (diesel only)
- Rudders, manganese bronze
- Seacocks, underwater thru hulls
- Shafts 1 1/4" stainless steel double taper, Aquamet 22
- Structural steel engine beds
- Struts, manganese bronze
- Trim tabs, single piston
- Twin engines w/reduction gearing
- Water lines, **copper**
- Water tanks, sanitized fiberglass
- Water system, pressurized

- Instrument alarm lights
- Lighting, 12V & 120V throughout
- Low oil pressure, audible
- Master control panel (AC/DC circuit breakers-voltmeters-ampmeters)
- Navigation lights
- Receptacles, 120V duplex
- Reverse polarity light
- Vaporproof battery switches
- 30A/120V dockside, w/one 50' cord
- 50A/240V dockside, w/one 50' cord

FLYBRIDGE

- Dual lever controls
- Handrails
- Helm cover for instruments on boats w/o FBHT
- Helm seat, companion seat, adjustable
- Hydraulic steering
- Instrumentation, lighted
- Lighted compass
- Lounge seat w/vinyl covered foam cushions
- Molded fiberglass
- Safety monitoring system: fire, bilge pump, high bilge water, high exhaust temperature, bilge blower, generator and synchronizer
- Windshield, venturi type w/grab rail

COCKPIT

- Boarding box, fiberglass w/teak top
- Cable TV & telephone connection
- Dockside electric and water connection
- Molded fiberglass
- One piece ladder to flybridge
- Recessed cleats and hawse pipes
- Recessed fish boxes
- Self-bailing cockpit

SALON

- Carpeting throughout
- Engine access hatches
- Lighting, 1 20V
- L-shaped lounge
- Mini blinds
- Sliding salon door
- Sliding side windows w/screens
- Teak interior
- Upholstery & drapes, professionally designed

GALLEY

- AC/DC Refrigerator

- Electric range, 2 burner
- Exhaust fan
- Single lever hot & cold faucet
- Sink, stainless steel
- Stowage cabinets & drawers
- Teak parquet flooring
- Water filter
- Water level gauge
- Water pump light

STATEROOM

- Berth covers
- Berth lights, 12V
- Carpeting
- Hanging locker
- Hatch w:screen, fwd. only
- Lighting, 12V
- Receptacle, 120V
- Storage drawers
- Vinyl headliner

HEAD

- Electric toilet
- Exhaust fan
- Lighting, 12V
- Mirror
- Receptacle, 1 20V ground fault
- Stall shower
- Towel bar
- Vanity w/sink and storage
- **Vinyl** flooring

SAFETY & MISCELLANEOUS

- Anchor
- Anchor chocks
- **Anchor** rode, 200' •" nylon
- Anti-fouling bottom paint
- **Bow pulpit**
- Bow rail
- Dual air horns
- Fire extinguishers (2)
- Grab rails
- Halon tire protection system, automatic & manual
- **SSB** Grid
- Stainless steel bow cleats 121
- Stainless steel spring cleats (2)
- Stainless steel stern cleats 12)
- Tempered glass, all windows
- Zincs on rudders

35' Convertible)

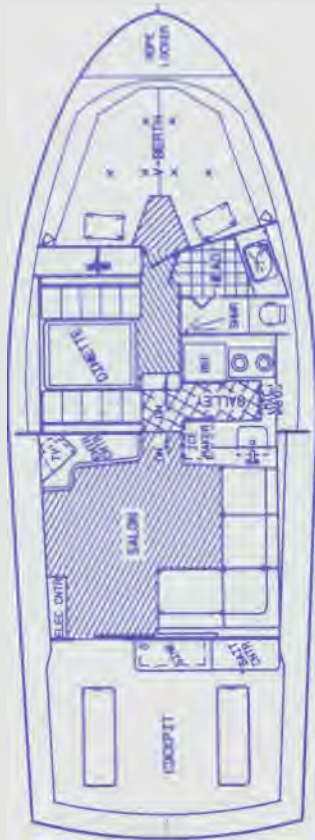
Twin Crusader, (Gas)	156,000	Twin G.M. 6V53	199,000
Twin Caterpillar, 3208TA	199,000		

OPTIONAL EQUIPMENT(4)(c)(s)

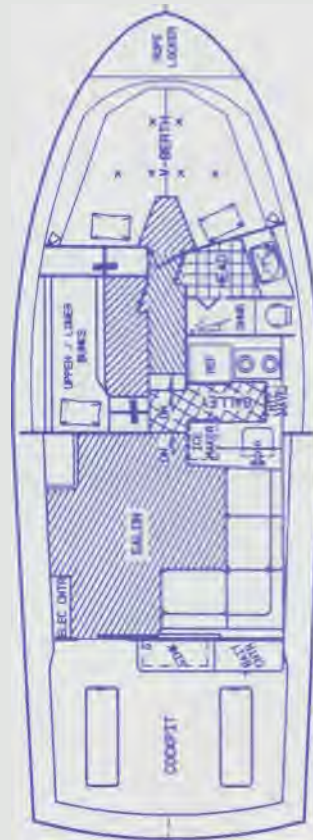
<p>Air Conditioning(^o) 7,930</p> <p>Canvas</p> <p>Bimini top 1,150</p> <p>Full enclosure, bimini w/three horseshoe openings 1,725</p> <p>Helm seat covers (2) 180</p> <p>Salon carpet runner 180</p> <p>Salon furniture covers 640</p> <p>Decoris</p> <p>Decor kit, mini 1,535</p> <p>Decor kit, maxi 3,015</p> <p>Electrical</p> <p>120 volt duplex receptacle 75</p> <p>120 volt weatherproof receptacle 165</p> <p>12 volt weatherproof receptacle 125</p> <p>Electronics(E)</p> <p>Fender Racks 670</p> <p>Fishing Equipment</p> <p>Fish door 1,760</p> <p>Outriggers, Rupp w/spreaders 3,375</p> <p>Rod holders (4) 360</p> <p>Tackle cabinet w/sink & freezer 2,825</p> <p>Tackle cabinet w/sink & ice chest 1,585</p> <p>Center Rigger(^K) 525</p> <p>(5) Rod rocket launcher w/FBHT 825</p> <p>(5) Rod rocket launcher wo/FBHT 1,360</p> <p>Generator</p> <p>Gas 7.5 K.W.(^m) 7,915</p> <p>Diesel 8 K.W.(^R) 10,110</p> <p>Glass, Tinted 650</p> <p>Giendinning Automatic Synchronizer 1,420</p> <p>Hardtop, Flybridge 6,730</p> <p>Full enclosure, w/three horseshoe openings 1,725</p> <p>Quartz lights 310</p> <p>Heater, Electric (fwd) 235</p> <p>Icemaker, in Galley 925</p> <p>Lettering</p> <p>Transom 270</p> <p>Bow 210</p> <p>Life Raft</p> <p>Coastal (6 man) 3,595</p> <p>Search & Rescue (6 man) 5,550</p>	<p>Lights</p> <p>Cockpit, indirect 345</p> <p>Cockpit, spreader 440</p> <p>Docking 635</p> <p>Remote spotlight 1,680</p> <p>Microwave Oven 955</p> <p>Oil Changing System (Engines and Generator) 775</p> <p>Paint, Black Windshield(^o) 1,375</p> <p>Portlights (Each) 130</p> <p>Propellers, (Spare)</p> <p>Gas 1,130</p> <p>Diesel 1,680</p> <p>Seawater Washdown 540</p> <p>Shaft, Spare 975</p> <p>Stereo w/Cassette 810</p> <p>Stereo speakers, flybridge 305</p> <p>Swim Platform 2,950</p> <p>Swim ladder 250</p> <p>Teak Rod Racks 130</p> <p>TV, Remote Color w!Antenna (Built-in) 775</p> <p>Water Delivery Kit(^N) 425</p> <p>Water Delivery Kit w/176 PC tool set 570</p> <p>Windlass</p> <p>Model A, Chrome Capstan w/200' 5/8" line 1,525</p> <p>Model CWM, Chrome Capstan 1,940</p> <p>Chain for CWM (per ft) 6</p> <p>Windshield, Tempered Glass, Three-Piece 4,865</p> <p>V-Valve Emergency Bilge Pumps (2) 820</p> <p>Cradle, Launch and Make Ready, Fuel and Freight (E Additional</p> <p>interior Decor Selection:(s)</p> <p><input type="checkbox"/> Marlin Blue <input type="checkbox"/> Sea Sand</p> <p><input type="checkbox"/> Mauve <input type="checkbox"/> Peach & Spice</p> <p>Paint Selection:(s)</p> <p><input type="radio"/> Blue <input type="checkbox"/> Burgundy <input type="checkbox"/> Black</p>
---	---

NOTES

- A The right is reserved to make changes, without notice, at anytime, in equipment, materials, prices and specifications. Line drawings and photos may show some optional equipment.
- B Capacities of tanks are estimates and usable volume will vary depending upon conditions.
- C These prices apply only if order is placed prior to boat going into production. Prices are for standard installation only. Custom work is extra cost.
- D Weight shown is calculated with fuel, water and holding tanks empty.
- E Prices available through dealer.
- K Requires flybridge hardtop.
- N Includes mooring lines (5), life jackets (6 adult), life ring (21"), flare kit, fenders: 10" (2), engine oil (5 gal.) A.T. Fluid (2 qts.) (Gas), deck mop, deck brush, bucket, hose, nozzle, fuel filters: engines and generator, raw water pump impeller for main engine (1), Boat Soap (1 qt.) and Bilge Cleaner (1 qt.).
- O Includes black stripes and bottom paint; Requires WARRANTY DISCLAIMER.
- Q Includes reverse cycle heat.
- R Generator is not intended to supply power for all standard and optional accessories. Load must be limited to generator output rating.
- S In order to offer the full range of decor and paint: selections are required with initial order.



DINETTE



STATEROOM

VIKING ONE YEAR LIMITED WARRANTY

1. Viking warrants to the original purchaser, for a period of One (1) year from the date of delivery, Eighteen (18) months from the date of shipment from the factory, or upon completion of Two Hundred (200) hours of operation, whichever ever comes first, the following!

Thai Viking will, through the selling dealer, replace or repair, at the discretion of Viking, any part or component, manufactured by Viking which is proven to the satisfaction of Viking to be defective, and which has occurred under normal use and service within the warranty period.

This writing is meant to be a complete and exclusive statement of the terms of all Viking warranties.

2. THERE ARE NO OTHER WARRANTIES EXPRESS OR IMPLIED THAT EXTEND BEYOND THE FACE OF THIS INSTRUMENT. VIKING RESTRICTS ITS WARRANTY TO REPAIR OR REPLACEMENT IN LIEU OF ALL OTHER WARRANTIES EXPRESS OR IMPLIED. VIKING SHALL NOT BE LIABLE FOR ANY INCIDENTAL, CONSEQUENTIAL OR INDIRECT DAMAGES CAUSED AS A RESULT OF ANY DEFECT IN WORKMANSHIP, REPAIR OR REPLACEMENT. SOME STATES DO NOT ALLOW LIMITATIONS ON HOW LONG AN IMPLIED WARRANTY LASTS. SO THE ABOVE LIMITATION MAY NOT APPLY TO YOU. SOME STATES DO NOT ALLOW THE EXCLUSION OR LIMITATION OF INCIDENTAL OR CONSEQUENTIAL DAMAGES. SO THE ABOVE LIMITATION OR EXCLUSION MAY NOT APPLY TO YOU. THIS WARRANTY GIVES YOU SPECIFIC LEGAL RIGHTS, AND YOU MAY ALSO HAVE OTHER RIGHTS WHICH VARY FROM STATE TO STATE.

3. Viking invites any purchaser to inspect the vessel before purchase, with party experts [mechanical or otherwise] to determine to the purchaser's satisfaction, the condition of the vessel prior to purchase.

4. The dealer is not the agent of Viking and Viking does not authorize the dealer, or any other person, to assume for Viking any liability in connection herewith or any liability or expenses incurred in the repairing of its product other than those expressly authorized herein. After an authorized dealer has been assigned by Viking for warranty work, reimbursement for labor costs provided by the dealer under the Viking warranty will be based upon a rate and schedule established by Viking. This reimbursement shall be through the selling dealer.

5. Viking reserves the right to improve its products through change and design or material without obligation to incorporate such change in boats of prior manufacture. Viking does not have a model year as such, and changes are incorporated in boats by the manufacturer as same are constructed from time to time. Viking does not warrant or represent that a particular boat is of a particular model year.

6. The defect must be reported to Viking in writing within Thirty (30) days of the discovery of same with the following information:

- a) Owner's name and address;
- b) Bow serial number (hull number). Information as to nature of defect;
- c) Date actually placed in service;
- (a) Accumulated hours of days of service.

All warranty notice and other necessary communications in connection with this warranty should be sent to the following address:

Viking Yacht Company
Route 9
On the Bass River
New Gretna, New Jersey 08224

7. You may inquire regarding warranty coverage, etc., by means of the following:
- (a) Contacting the Viking dealer from which you purchased your Viking for an inspection of the problem involved.
 - (b) Delivering your Viking to the selling dealer for an examination on the premises
 - (c) Contact the company at the above-mentioned address.

B. All warranty claims for engines shall be presented directly to the engine manufacturer. Correspondence to the engine manufacturer shall include the engine serial number, date of purchase, dealer from whom purchased, accumulated hours, and description of the alleged defects. Copies of all correspondence shall be forwarded to Viking at the time of the original transmittal of same. Viking passes on any and all warranties of products or components which are not of Viking's manufacture and any warranty provided by the manufacturer is assigned to the owner, if possible.

9. Viking will not be responsible for any damage to a vessel, or parts hereof, which have been subjected to abuse or neglect, faulty installation by personnel not directly employed by Viking, lack of, or improper maintenance, or failures caused by accident,

10. This warranty shall not apply to:
- (a) Products or components not manufactured by Viking.
 - (b) Parts altered in any manner from original manufacture.
 - (c) Fuel consumption or performance characteristics because they are merely estimates.
 - (d) Varnishes, peckings, paints, fabrics, chromium plated and stainless steel finishes because of differing climatic conditions.
 - (e) Others than the last owner.
 - (f) Yachts in commercial use.
 - (g) Electronics or electronics installation.
 - Canvas, enclosure or binnacle installations.