



# **viking 48**

CONVERTIBLE



The Best of Both Worlds: That's what the Viking 48' Convertible is all about. Inside you will find the most functional and luxurious interior of its kind. Outside you have an uncompromising cockpit for the most serious of fishermen and a flybridge big enough for a party of -10. And of course



Entering the large main salon you find a convertible L-shaped sofa to port and the standard entertainment center complete with cassette deck, T.V., and VCR to starboard. An upholstered barrel chair is also standard.

Moving forward you find the galley and dinette area conveniently located just one step off the main salon. This deckhouse galley; (equipped with micro/convection oven, 19 cu.ft. refrigerator/freezer and garbage disposal) has generous storage areas and complete accessibility to the main salon and dinette. The galley also incorporates the bar area with ice maker. This central location eliminates, wasted salon space yet keeps you right in the middle of all the action.

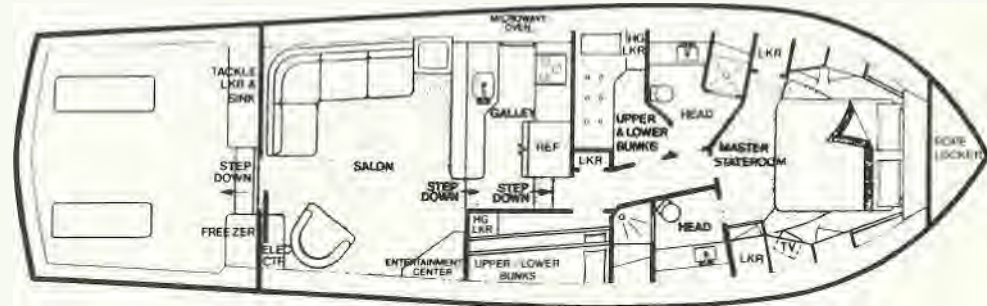
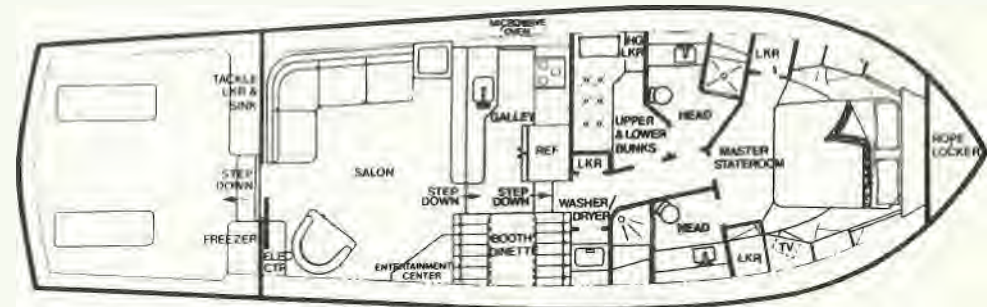
Continuing forward you now enter the stateroom, head and companionway areas. Even in the companionway, use of space has taken a priority. On the port side there is a hanging locker and pantry and on the starboard side a washer and dryer compartment with additional hanging space.

The port side guest stateroom has upper and lower bunks with a private head and stall shower. This head also doubles as a day head. The master stateroom located in the bow features a walk around queen-size bed, a completely private head with stall shower, and spacious storage drawers and lockers. If three staterooms are your requirement, a third stateroom is available in place of the convertible dinette.

And for the ardent fisherman there's a 144 sq. ft. cockpit with recessed fishboxes, walk through transom door, teak covering boards, and molded tackle cabinet with sink and cockpit freezer. All standard.

Unmatched luxury. Exceptional speed and performance. The Viking 48. Definitely the best of both worlds.

# viking48 CONVERTIBLE



Route 9 & The Garden State Parkway  
New Gretna, N.J. 08224  
609-296-6000