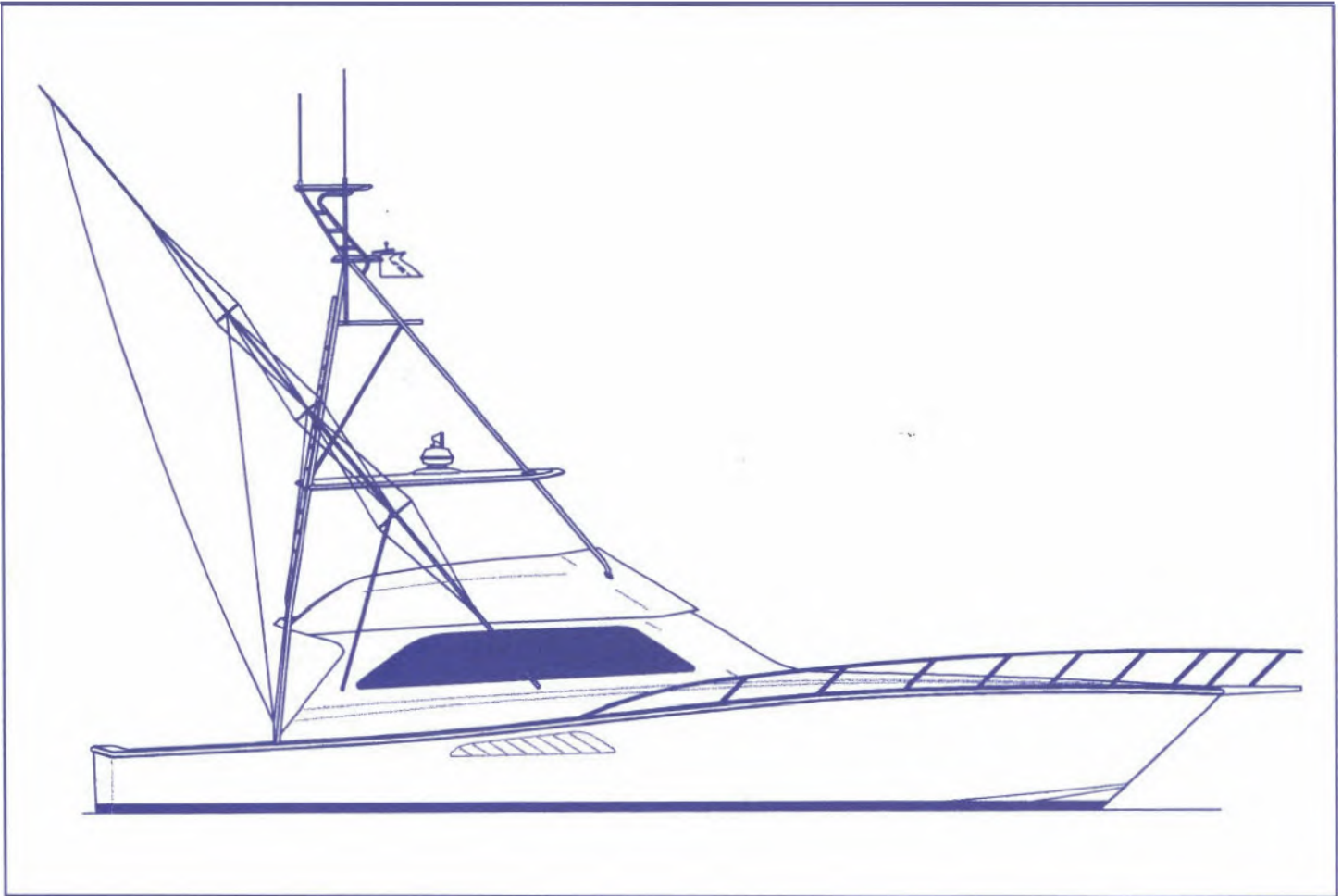


# viking yacht

---

## 55' Convertible



**EFFECTIVE ON DELIVERIES  
JANUARY 1, 2001 THRU JULY 31, 2001  
PRICES SUBJECT TO CHANGE  
WITHOUT NOTICE**

## Specifications

# 55' CONVERTIBLE(A)

## STANDARD EQUIPMENT

### CONSTRUCTION

- Hand laid-up, molded fiberglass hull, deck, deckhouse and flying bridge w/end grain balsa core in hull sides, decks and cabin top
- Solid keel and chines

### MECHANICAL

- Acoustical and thermal insulation
- Air conditioning, zoned with reverse cycle heat
- Bilge pumps (4)
- Dockside water connection w/pressure reducing valve
- Engine room blowers
- Engine room gauge package 0
- External sea strainers
- Fire protection system - automatic/manual
- Fresh water fill hose, engines and generator
- Fuel lines, flexible aircraft type
- Fuel priming pumps, manual
- FueVWater separator filters, engine & generator
- FWC propulsion-engines, generator
- Glendinning synchronizer
- Holding tank with dockside and overboard pumpout
- Hour meters
- Hydraulic controls
- Hydraulic steering
- Intermediate struts, manganese bronze
- Mufflers, engines and generator
- Oil changing system, engines and generator
- Propellers, nibral
- Reinforced fiberglass fuel tanks
- Rudders, manganese bronze
- Seacocks, underwater thru-hulls
- Shafts stainless steel, double taper (2)
- Structural steel engine beds
- Struts, manganese bronze
- Trim tabs
- Twin diesel engines w/reduction gearing
- Water heater
- Water system, pressurized
- Water tanks, reinforced fiberglass
- Y-valve emergency bilge pumps (2)

### ELECTRICAL

- Anchor light
- Batteries, heavy-duty w/fiberglass box
- Battery charger
- Battery disconnect switches
- Battery paralleling
- Bonded electrical system w/ground plate
- Color coded wiring system
- Engine room lights
- Generator ""20KW
- Glendinning cablemaster
- Instrument panel lights
- Lighting, 24V & 120V throughout
- Master control panel (AC/DC circuit breakers, frequency meter, voltmeters, ampmeters)
- Navigation lights
- Receptacle, 120V duplex
- 50A/240V dockside cord w/cablemaster
- Voltage stabilizer transformer

### FLYING BRIDGE

- Dual lever hydraulic controls
- Fire system control
- Handrails, aluminum
- Helm seat, companion seat, adjustable
- Hydraulic steering
- Instrumentation, lighted
- Lighted 5' compass
- Lockers
- Lounge seats w/vinyl covered foam cushions
- Molded fiberglass
- Power assist steering
- Recessed electronics box

- Safety monitoring system: Fire, engine room temp., high bilge water, high exhaust temp., high coolant temp., low oil pressure and generator
- Stereo speakers
- VHF radio SEA 156
- Windshield, Venturi-type

### COCKPIT

- Boarding box, fiberglass
- Cable TV and telephone connection, each w/50' cord
- Dockside electric and water connection
- Engine room access
- Fresh water washdown
- Ladder, one piece to flying bridge, aluminum
- Lights, indirect
- Lights in overhang
- Molded fiberglass
- Recessed cleats and hawse pipes
- Recessed fish box
- Rod holders (4)
- Sea water washdown
- Self bailing cockpit
- Speakers
- Storage locker
- Tackle cabinet w/freezer & bait center
- Walk-thru transom door

### SALON

- Carpeting throughout
- Decorative mirrors
- Dinette
- Entertainment system, w/color TV w/antenna, VCR, FM stereo and CD player
- L-shaped lounge w/sleeper with storage
- Lighting, overhead
- Lighting, indirect
- Mini blinds
- Phone outlet
- Sliding salon door
- Storage cabinets
- Teak interior
- Upholstery and drapes, professionally designed
- Viking home theater audio/video
- Vinyl headliner
- Windows, tinted

### GALLEY

- Duplex electrical outlet
- Electric range
- Exhaust fan
- Garbage disposal
- Icemaker in refrigerator
- Lighting
- Microwave/Convection oven
- Single lever hot and cold faucet
- Sink
- Storage cabinets and drawers
- Stowage for dishes and glasses
- Tile floor
- Under counter refrigerator 0
- Upright refrigerator
- Water filter
- Water level gauge, electric
- Water pump light

### MASTER STATEROOM

- Bedspread, quilted
- Carpeting
- Decorative mirrors
- Hanging lockers
- Hatch
- Headboard, upholstered
- Indirect lighting
- Large drawers under bed

- Pillow shams (2)
- Queen-size walk-around bed w/mattress and lift top
- Reading lights
- Sheets (1 set)
- Stereo speakers
- Storage cabinets
- Storage drawers
- TV, color, built-in

### GUEST STATEROOM (STBD)

- BedsoAd, quilted
- Carpeting
- Hanging locker
- Pillow shams (2)
- Sheets (1 set)
- Stereo speakers
- Storage drawers
- Upper and lower berths
- Vinyl headliner

### GUEST STATEROOM (FWD)

- Bedspread, quilted
- Carpeting
- Hanging locker
- Pillow shams (2)
- Queen-size walk-around bed
- Sheets (1 set)
- Stereo speakers
- Storage drawers
- Vinyl headliner

### MASTER & GUEST HEADS

- Electric toilet
- Exhaust blower fan
- Linen storage
- Lighting
- Medicine cabinet w/mirrors
- One-piece molded countertop w/sink
- Receptacle, 120V
- Shower light
- Stall shower w/automatic sump pump
- Towel bars
- Vinyl tile floor

### COMPANIONWAY

- Central vacuum
- Lighting
- Vinyl headliner
- Washer and dryer
- Wall covering

### MISCELLANEOUS

- Anchor
- Anchor locker w/access from deck
- Anchor rode, 200' 3/4" nylon
- Anti-fouling bottom paint
- Awlgrip engine room
- Bow pulpit
- Bow rail, aluminum
- Depthfinder
- Dual air horns
- Fire extinguishers (5)
- Fire protection system, automatic & manual
- Grab rails
- Knotmeter
- SSB grid
- Stainless steel bow cleats
- Stainless steel spring cleats (4)
- Stainless steel stern cleats (2)
- Tempered glass, all windows
- VHF radio w/antenna
- Zinc on transom

## 55' CONVERTIBLE SPECIFICATIONS(A)

Length, overall (L.O.A.) ..... 55'10" ..... 17.0 meters	Freeboard, aft ..... 2'11" ..... 1.0 meters
Length, overall (including bow pulpit) ..... 59'10" ..... 18.2 meters	Height, waterline to top of:
Waterline length (L.O.W.) ..... 50'2" ..... 15.3 meters	flying bridge hardtop ..... 17'1" ..... 5.2 meters
Beam ..... 17'4" ..... 5.3 meters	flying bridge masthead light ..... 19'10" ..... 6.4 meters
Deadrise (transom) ..... 15° ..... 15°	flying bridge windshield ..... 13'2" ..... 4.0 meters
Draft ..... 4'10" ..... 1.5 meters	Gross weight approx. .... 68,800 lbs ..... 31,235 kilos
Freeboard, forward ..... 5'10" ..... 1.8 meters	Fuel capacity <sup>(E)</sup> ..... 1,250 gallons ..... 4,731 liters
	Water capacity ..... 250 gallons ..... 946,00 liters

**STANDARD POWER: MAN 2840LE403:1050BHP**

### OPTIONAL EQUIPMENT <sup>(A)</sup>(cl(s))

#### COCKPIT

Live well in cockpit sole .....	1,850
Outriggers, 39', Rupp w/triple spreaders .....	190
Swim platform & ladder .....	5,775
Transom custom lettering .....	FOR
Transom std. lettering .....	730
Transom fish box molded-in .....	2,800

#### DECK/EXTERIOR

Davit, (1,500 lbs.) tenderlift .....	18,620
Fender racks .....	1,045
Life raft, Coastal (6 man) .....	4,425
Search & rescue (6 man) .....	6,700
Windlass, Simpson Lawrence Sprint GD Series w/300' chain ..	6,910

#### DECOR <sup>\*</sup>

Applied bedspread and shams, MSR (IPO STD) .....	550
Custom decor <sup>(4)</sup> .....	POR
Decor mini accessory kit .....	5,000
Decor maxi accessory kit .....	8,265
Luxury edition .....	5,370
Sofa, upgraded style .....	POR
Wallcovering, custom" .....	POR

#### FLYING BRIDGE

Canvas, track to track on front and side of enclosure .....	690
Center rigger .....	910
Custom helm pod .....	3,760
Electronic controls .....	5,720
Electronic single lever controls for pod .....	7,540
Electronic trolling valves .....	4,260
EZ2CY .....	POR
Hardtop .....	16,715
4 sided enclosure .....	5,065
Lights, remote spotlight .....	1,935
Radar mast .....	5,940
(6) Rod rocket launcher .....	1,100
Strataglass upgrade for enclosure .....	1,445

#### GALLEY

Dishwasher (n/a w/trash compactor) .....	1,145
Trash compactor (n/a w/dishwasher) .....	1,260

#### SALON

Carpet runner full .....	690
Carpet runner partial .....	430
Table, cocktail .....	2,075

#### MASTER STATEROOM

Stereo/CD player (12V) .....	860
Telephone (additional outlet) each .....	365

#### GUEST STATEROOM - FWD

Custom VIP stateroom arrangement .....	4,525
Stereo/CD player (12V) .....	860
Telephone (additional outlet) each .....	365
Television (additional outlet only) each .....	485
TV, 13" color .....	1,345

#### GUEST STATEROOM - STBD

Stereo/CD player (12V) .....	860
Telephone (additional outlet) each .....	365
Television (additional outlet) each .....	485

#### DELIVERY

Cradle .....	5,850
Fuel & freight .....	(E)Additional
Propellers, spare (2) .....	14,200
Water delivery kit <sup>(4)</sup> w/tool set .....	1,100

#### ENGINE ROOM

Fuel system priming pumps <sup>(M)</sup> .....	1,445
Generator, additional 20KW .....	20,990
OPTIONAL POWER:	
MAN2842LE404: 1300BHP .....	POR
Water maker, 600 GPD w/auto backflush .....	12,180

#### INTERIOR DECOR SELECTION

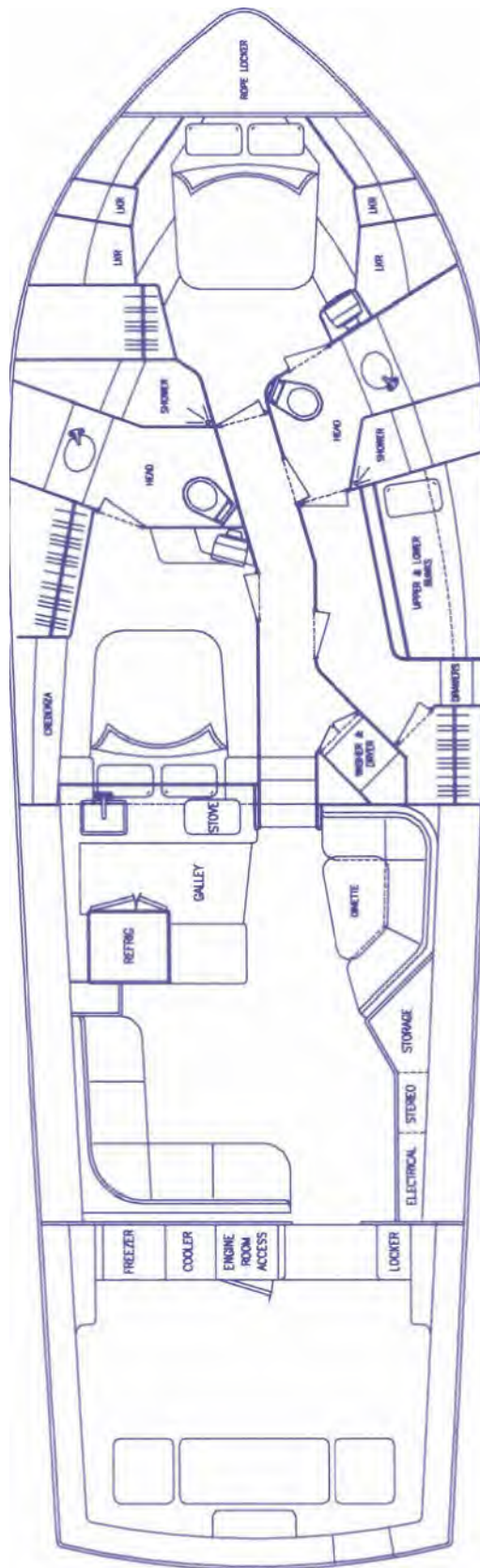
<input type="checkbox"/> Antigua	<input type="checkbox"/> Café	<input type="checkbox"/> Mosaic Blue
<input type="checkbox"/> Teal	<input type="checkbox"/> Luxury	<input type="checkbox"/> Custom

**PAYMENT - REMAINING BALANCE IN FULL IS DUE WHEN CONSTRUCTION IS COMPLETED.**

#### NOTES:

- A The right is reserved to make changes, without notice, at any time, in equipment, materials, prices and specifications. Line drawings and photos may show some optional equipment.
- B Capacities of tanks are estimates and usable volume will vary depending upon conditions.
- C These prices apply only if order is placed prior to boat going into production. Prices are for standard installation only. Custom work is extra cost.
- D Weight shown is calculated with fuel, water and holding tanks full.
- E Prices available through Dealer.
- F One pullout drawer style refrigerator, one freezer.
- H Includes credit for standard.
- J Must be ordered 90 days prior to start date
- K Requires F/B hardtop.
- L Dual lever clutch and throttle only. Requires F/B dual lever controls, hydraulic.
- N Includes life jackets (6 adult), life ring (21"), flare kit, fenders: 10" (2), engine oil, deck mop, deck brush, bucket, hose, nozzle, fuel filters: engines and generator, raw water pump impeller for main engine (1), boat soap (1 qt.) and bilge cleaner (1 qt.).
- R Generator is not intended to supply power for all standard and optional accessories. Load must be limited to generator output rating.
- S In order to offer the full range of decor, selections are required with initial order.
- T Recommended for use in marinas that supply 120/208V three phase power vs. 125/250V single phase per national electrical code para 555-4.
- V Includes 12V lighting and cockpit flood lighting.
- W Standard manual pump will prime injection pump.
- X Includes engine water temperature, engine oil pressure, fuel filter VAC restriction, start and stop switches, digital tachometer.

# VIKING 55' CONVERTIBLE



## VIKING ONE YEAR LIMITED WARRANTY

Viking provides a 12 month limited warranty to the original purchaser. Certain restrictions apply. Ask your dealer for a copy.

**VIKING YACHT COMPANY • Route 9 • New Gretna, NJ 08224 • (609) 296-6000 • Fax (609) 296-3956**  
**[www.vikingyachts.com](http://www.vikingyachts.com)**