



Now at your Viking dealer:
the new Viking 55' Extended Aft Deck Motor Yacht.

A Classic Motor Yacht Made Even More Entertaining.

Viking is proud to introduce the 55' Extended Aft Deck (EAD) Motor Yacht, with all the owner-pleasing qualities of the Viking 55' Motor Yacht (MY) (speed, luxury, and performance) plus several important additions:

- the layout features a much larger galley with built-in dinette;
- a full-beam salon opens onto an enclosable 110 sq. ft. aft deck.

Luxury begins with technology.

The excellent hull performance of this new 55' EAD begins with computer-controlled design and testing to deliver a stable, soft ride with none of the conventional motor yacht compromises in handling, efficiency and speed. The 55' EAD achieves exceptional cruising speed with modest fuel consumption.

The inside story on entertaining.

On the inside, every aspect of the 55' EAD's accommodations enhances entertaining on a grand scale. The full-width salon features wide-view windows, a first-class wet bar and a complete, floor-to-ceiling built-in entertainment center. Every detail in this salon—from the grain-matched teak down to the door hardware—radiates luxury and taste. And, Viking stands by to cater to your individual decor preferences, instead of sending you to the customizing yard.

The Eurostyle gourmet galley is 22% larger than the one on our 55' Wide Body Motor Yacht—and provides generous cabinet storage, and all the

latest amenities.

A much-loved, practical feature of the 55' is a built-in U-shaped dinette, located just off the galley. It's the ideal place for informal gatherings for up to 6 people. Far forward is the large pilot house with a state-of-the-art helm spacious enough to flush mount a full complement of sophisticated electronics.

Your own seaside terrace.

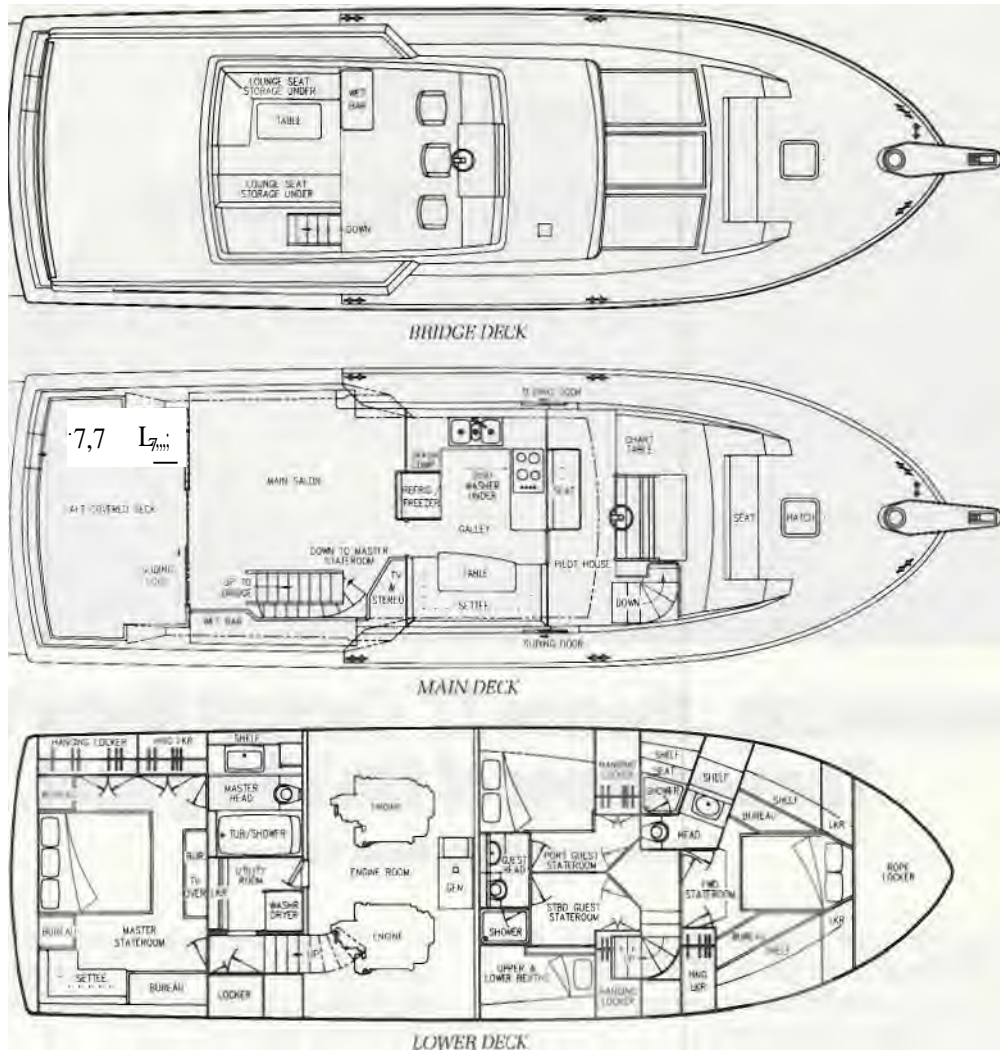
Sunrise to sunset, enjoy your own private waterfront terrace on the spacious covered aft deck. Aft deck innovations include a walk-through transom door, molded-in wrap-around weather board and a convenient 6-inch wide toe rail for easy close-quarter maneuvering and docking. For year-round comfort, the open aft deck can be completely enclosed. Its expansive sliding glass door opens onto the airy salon to enhance your indoor/outdoor entertaining possibilities and provide a remarkable 255 sq. ft. of usable entertaining space.

The style of the master.

The lower deck is reached by either of two stairways: one public to forward guest staterooms, the other restricted to the palatial aft master stateroom. The beautifully appointed aft master stateroom is furnished with a walk-around king-size bed, generous bureau and hanging cedar locker storage and private head with full-size tub. The complete entertainment center features a TV, AM/ FM stereo, CD and cassette.

Forward, there are three guest staterooms: the bow has a queen-size bed with hanging locker and

VIKING 55'
EXTENDED AFT DECK MOTOR YACHT



bureau storage; to port and starboard are spacious double-berth guest staterooms. There are two guest heads forward.

Amidship, a pair of acoustically isolated Detroit Diesels are housed comfortably in the stand-up, 360° access, full-beam engine room.

Get above the crowd.

Up top, the flybridge is equipped with a fully instrumented helm station that affords a commanding view for the captain as well as an expansive outdoor entertainment area with lounge seating for a dozen guests. The flybridge, conveniently reached from the interior via a carpeted teak stairway, is made of pre-preg fiberglass to improve stability and reduce unwanted weight aloft.

No mere description can do justice to this remarkable motor yacht. To truly appreciate the craftsmanship and performance of the Viking 55' EAD, you must see it for yourself. Contact your local Viking dealer to arrange a personal inspection.

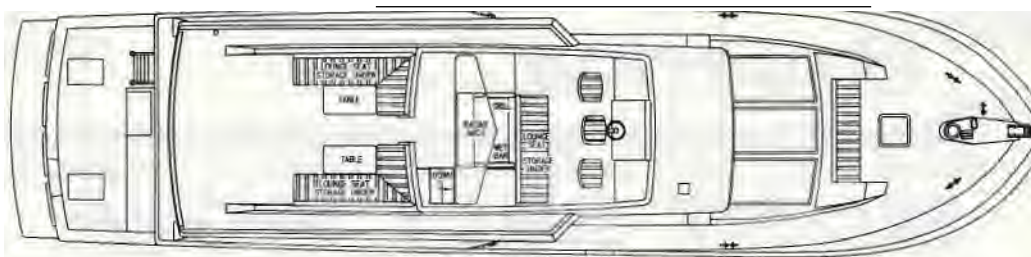
55' EAD Motor Yacht Specifications:

Length, overall	55' 7"	(16.9 meters)
Beam	17' 4"	(5.3 meters)
Draft	4' 5"	(1.3 meters)
Gross weight	56,000 pounds	(25,401.6 kilos)
Fuel capacity	770 gal.	(2,918 liters)
Water capacity	350 gal.	(1,325 liters)
Power	D.D.C. 8V-92TA	

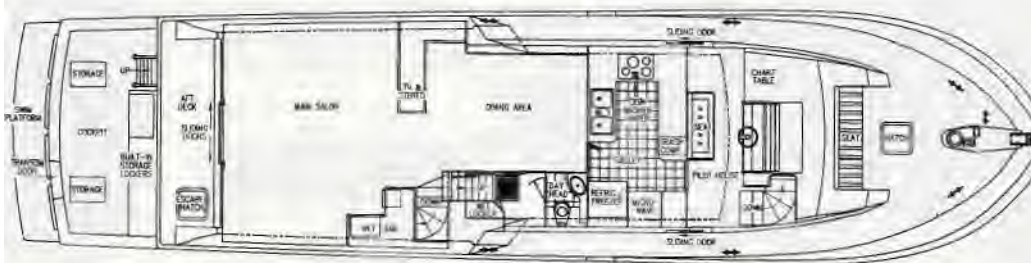
Viking Yacht Company, Route 9 and the Garden State Parkway, New Gretna, Nj 08224
(609) 296-6000, FAX (609) 296-3956

Qz.7/7_ **viking**
rz=z.L.7s

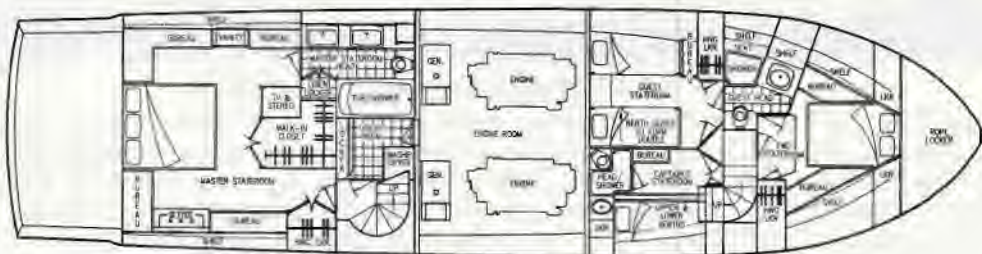
Where luxury
assumes new meaning.



BRIDGE DECK



UPPER LEVEL



LOWER LEVEL

are three staterooms forward: the crew's quarters and two spacious double-berth guest suites. All have convenient private access to a head and their own entertainment system.

The aft master suite is larger than most salons and is furnished with a walk-around king-size bed, generous storage including a full walk-in closet and deluxe head with whirlpool bath. The floor-to-ceiling entertainment center features a see-through mirrored cover, and houses a TV, VCR, AM/FM stereo and CD player, as well as a first-class bar and refrigerator.

Expand your horizons.

Up top, the flybridge extends the entire length of the main deck and is equipped with a fully instrumented command station plus an expansive outdoor entertainment area with lounge seating for twenty guests.

The flybridge is reached by a convenient, concealed stairway from the salon and is constructed from pre-preg fiberglass to reduce unwanted weight aloft (therefore improving stability).

Coming to your Viking Motor Yacht dealer this spring.

If you missed seeing the new Viking 72'

Cockpit Motor Yacht at its premiere during the Miami International Boat Show, in February, you can see it at a Viking Motor Yacht dealer. When you witness first hand the high-tech innovations, creative engineering and meticulous quality built into every aspect of this yacht, you will agree that excellence still exists.

The Viking 72' is a pulse-quickenning experience.

72' Cockpit Motor Yacht Specifications:

Length, overall 72' 0" (22.00 meters)

Beam 17' 5" (5.30 meters)

Draft 4' 10" (1.42 meters)

Gross weight 80,000 pounds (36,364 kilos)

Fuel capacity 1,470 gal. (5,564 liters)

Water capacity 350 gal. (1,325 liters)

Power D.D.C. 12V-71TA: 900 bhp

D.D.C. 12V-92TA: 1,080 bhp



Where luxury assumes new meaning.

Viking Yacht Company, Route 9 and the Garden State Parkway, New Gretna, NJ 08224
(609) 296-6000, FAX (609) 296-3956

FREE INFORMATION CIRCLE 156 ON THE READER SERVICE CARD