

**EFFECTIVE ON DELIVERIES**

JANUARY 1, 1989 - JULY 31, 1989

PRICES SUBJECT TO CHANGE  
WITHOUT NOTICE

# **viking 72' motor yacht** **specifications**

# 72' MOTOR YACHT SPECIFICATIONS <sup>(A)</sup>

LOA .....	72' .....	22.00 meters	Height from waterline to top of radar arch .....	21'1½" .....	7.00 meters
Beam .....	17'5" .....	5.30 meters	Degree of deadrise transom ...	16°	
Draft .....	4'9" .....	1.40 meters	Gross weight of boat <sup>(D)</sup> .....	79,000 pounds ...	35,834.00 kilos
Freeboard Forward .....	9'8" .....	3.00 meters	Fuel Capacity <sup>(B)</sup> .....	1,270 gallons .....	4,806.00 liters
Freeboard Aft .....	6'7" .....	2.00 meters	Water Capacity <sup>(B)</sup> .....	280 gallons .....	1,059.00 liters

## STANDARD EQUIPMENT

### CONSTRUCTION

- Hand laid-up, molded fiberglass hull, deck, deckhouse and flybridge w/end-grain balsa core
- Solid keel and chines

### MECHANICAL

- Acoustical and thermal insulation
- Air conditioning, w/reverse cycle heat
- Bilge pumps (3)
- Bilge pumps, engine driven mechanical P + S
- Dockside water connection w/pressure reducing valve
- Engine room blowers
- Engine room mechanical gauges
- External sea strainers
- Fresh water outlet in engine room
- Fresh water washdown on foredeck
- Fuel lines, flexible aircraft type
- Fuel/water separator filters
- FWC propulsion-engines, generator
- Glendinning automatic synchronizer
- Halon fire protection system-automatic and manual
- Holding tank w/overboard y-valve
- Hot water heater
- Hour meters
- Hydraulic steering and engine controls
- Main and intermediate struts
- Manifold fuel filters for main engines
- Mufflers-engines and generator
- Oil changing system, engines, transmissions and generator
- Propellers, bronze
- Reinforced fiberglass fuel tank
- Seacocks, underwater thru hulls
- Shafts (2) 2½" Aquamet 22 - double taper
- Trim tabs, double piston
- Twin diesel engines w/reduction gearing
- Water system, pressurized
- Water tank, fiberglass

### ELECTRICAL

- Anchor light
- Batteries, heavy duty
- Battery chargers
- Bonded electrical system with ground plate
- Color coded wiring system
- Dual 50A/240V dockside (P + S) with two 50' cords
- Engine room lights
- Generator (R) 20 KW
- Generator control panel
- Instrument panel lights
- Lighting, throughout
- Master control panel (AC/DC circuit breakers, voltmeters, ammeters)
- Navigation lights
- Receptacles, 120V duplex
- Vaporproof battery switches

### DECK

- Anodized aluminum stanchions
- Boarding ladder with mounts P + S
- Foredeck seat with Cover
- Fender holders (6)
- Fender Tracks P + S
- Fiberglass Bulwark with teak caprails
- Glendinning Cablemaster
- Hot and Cold Shower
- Washdown, Freshwater
- Washdown, Seawater on foredeck
- Windlass Model BHW

### FLYBRIDGE

- Bimini top
- Console Cover
- Davit, Low profile, Electric
- Dual lever (Hydraulic) clutch and throttle controls
- Handrails
- Helm Chair, adjustable (3)
- Helm Chair, covers (3)
- Hydraulic steering
- Ice maker
- Instrumentation, lighted
- Lighted 5" compass

- Lockers
- Lounge seating, U-Shaped
- Molded fiberglass
- Monitoring system: fire, bilge pump, high bilge water, high exhaust temperature, and generator
- Seating Group Covers
- Storage under seating
- Windshield, venturi-type w/grab rail
- Weatherproof Receptacle (120V)

### MASTER HEAD

- Exhaust fan
- Full size bathtub with shower
- Marine toilet
- Mirror
- Receptacle, 120V ground fault
- Towel bar
- Vanity with two sinks and storage

### PILOTHOUSE

- Bench seating
- Dual lever (Hydraulic) clutch and throttle controls
- Hydraulic steering
- Step Lights P + S
- Television Outlet
- Telephone Outlet
- Windshield Cover
- Windshield wipers (3) with washers

### GALLEY

- Conventional Oven
- Dishwasher
- Electric range, 4 burner
- Exhaust hood
- Garbage disposal
- Insta-Hot Water
- Microwave/convection oven
- Pantry adjacent to refrigerator/freezer
- Refrigerator/freezer with ice dispenser in door
- Salon level with open access to pilothouse and dining area
- Single lever hot and cold faucet
- Sink, stainless steel, triple bin
- Storage cabinets and drawers, Corian trimmed
- Storage for dishes and glasses
- Trash Compactor
- Water filter

### DINING SALON

- Access to master stateroom and utility room
- Lighting
- Sliding side windows
- Storage cabinets
- Teak interior

### MAIN DECK HEAD

- Exhaust Fan
- Marine Toilet
- Mirror
- Receptacle, 120V Ground Fault
- Towel Bar
- Vanity with Sink and Storage

### MAIN SALON

- Sliding windows
- Teak interior
- Telephone outlet
- Entertainment center with color television, VCR, Stereo, with AM/FM cassette, and CD player

### AFT DECK

- Ladder to boat deck
- Television outlet
- Telephone outlet
- Weatherproof Receptacle (120V)

### MASTER SUITE

- Bronze bevelled mirror over master berth
- Bureaus with overhead storage cabinets
- Hanging lockers, cedar lined
- Hatch to aft deck

- Indirect lighting
- Whirlpool spa between "His" and "Her" aft heads
- King-size walk-around bed
- Lighting and outlets
- Refrigerator in entertainment center
- Storage cabinets
- Storage drawers
- Entertainment center with color television, VCR, Stereo with AM/FM and CD player; all with remotes
- Telephone outlet
- Exhaust fan in heads
- Receptacles, 120V ground fault in heads
- Twin "His" and "Her" aft heads with marine toilets, Sinks, Mirrors and Storage Lockers

### GUEST SUITE (AFT)

- Twin berths convert to double
- Shelf above portside berth
- Entertainment Center with color TV, AM/FM stereo
- Hanging locker and bureau
- Mirror Over bureau
- Private head with marine toilet, sink, mirror, storage and stall shower
- Lighting and outlets
- Telephone outlet

### GUEST SUITE (FWD)

- Entertainment Center with color TV, AM/FM stereo
- Exhaust fan in head
- Full double centerline bed with mattress
- Hanging locker
- Lighting and outlets
- Mirror
- Private head with marine toilet, sink, mirror, storage and stall shower
- Receptacle, 120V ground fault in head
- Stereo speakers w/control
- Storage drawers
- Telephone Outlet

### CREW QUARTERS

- Access to Engine Room
- Berths, Upper and Lower
- Berth Lights
- Bureau
- Dinette
- Electric Range (two burner), Refrigerator, Sink, Storage
- Entertainment Center with color TV, AM/FM stereo
- Refrigerator
- Single lever H&C faucet
- Storage Lockers
- Telephone Outlet
- Washer/Dryer
- Vinyl flooring in crew galley area

### CREW HEAD

- Marine Toilet
- Mirror
- Receptacle, 120V GFI
- Stall Shower
- Towel Bar
- Vanity with Sink and Storage

### MISCELLANEOUS

- Air Horns with dedicated compressor
- Anchor
- Anchor rode, and chain
- Anti-fouling bottom paint
- Bow pulpit
- Bow rail
- Central vacuum
- Depthfinder
- Dual electric horns
- Fire extinguishers
- Grab rails
- Knotmeter
- SSB grid
- Stainless steel bow cleats
- Stainless steel spring cleats
- Stainless steel stern cleats
- Swim platform with swim ladder
- Tempered glass, side and aft windows
- Tinted Glass, side & aft
- VHF radio w/antenna
- Zincs

## 72' MOTOR YACHT<sup>(A)</sup>

Twin G.M. 12V-71TA ..... 1,360,000

### OPTIONAL EQUIPMENT<sup>(A)(C)(S)</sup>

#### ELECTRICAL

Generator 20KW, Additional<sup>(R)</sup> ..... 18,205  
 120V Duplex Receptacle ..... 125  
 120V Weatherproof Receptacle ..... 365  
 12V Weatherproof Receptacle ..... 355

#### FLYBRIDGE

Boston Whaler 11' w 20 HP electric start  
 outboard, and chocks ..... 10,780  
 Boston Whaler 13' with 40 HP electric start  
 outboard, and chocks ..... 13,090  
 Radar Arch/Mast ..... POR  
 Wet Bar with Refrigerator, Ice maker,  
 and Jenn-Air grill ..... 4,900

#### LIGHTS

Docking ..... 825  
 Pilothouse Steplights ..... 130  
 Spotlight, Halogen with Dual Remote Control ..... 2,200

#### MECHANICAL

Spare Propellers ..... 4,925  
 Spare Shaft ..... 5,675  
 Water Maker 600 GPD ..... 8,000

#### MISCELLANEOUS

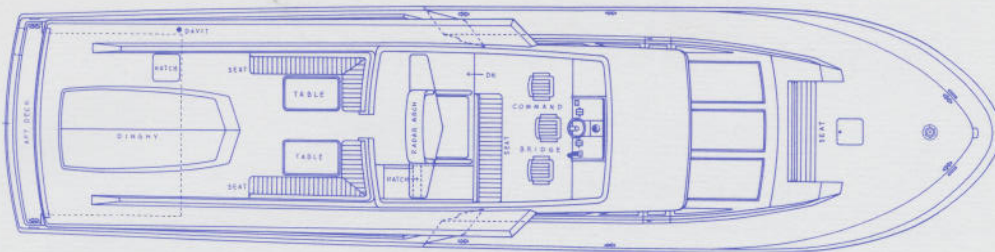
(Decorating Allowance \$33,000)<sup>(S)</sup>  
 Scandinavian Maple Interior ..... 23,760  
 Water Delivery Kit<sup>(N)</sup> ..... 695  
 Water Delivery Kit with 76 Piece Tool Set ..... 840  
 Wet Bar on Aft Deck ..... 6,600

#### LAUNCH AND MAKE READY

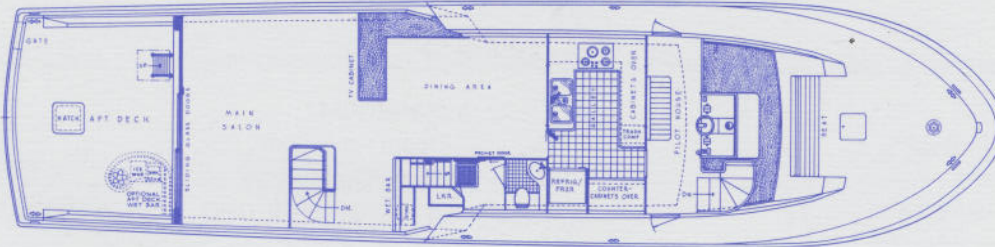
FREIGHT AND FUEL<sup>(E)</sup> ..... ADDITIONAL

#### NOTES:

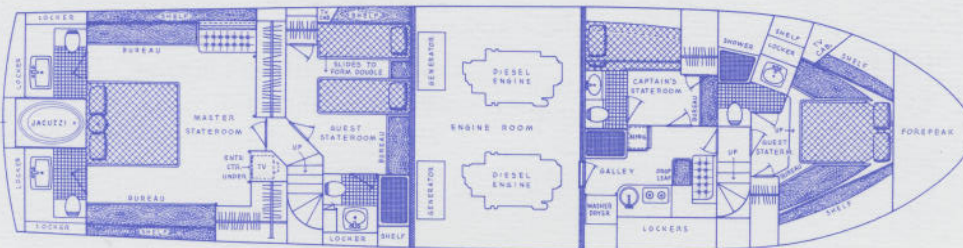
- A The right is reserved to make changes, without notice at anytime, in equipment, materials, prices and specifications. Line drawings and photos may show some optional equipment.
- B Capacities of tanks are estimates and usable volume will vary depending upon conditions.
- C These prices apply only if order is placed prior to boat going into production. Prices are for standard installation only. Custom work is extra cost.
- D Weight shown is calculated with fuel, water and holding tanks empty.
- E Prices available through dealer.
- N Mooring lines (6), Life jackets (6), Life ring (21"), Flare kit, Fenders: 10" (4), Engine oil (5 gal.), Deck mop, Deck brush, Bucket, Hose, Nozzle, Fuel filters: Engine and generator, Oil filters: engine and generator, Gear box filter, Raw water pump impeller for main engine (1), Boat soap (1 quart) and Bilge cleaner (1 quart).
- R Generator is not intended to supply power for all standard and optional accessories. Load must be limited to generator output rating.
- S In order to offer the full range of decor and paint: selections are required with initial order.



BRIDGE DECK



MAIN DECK



LOWER DECK

### VIKING ONE YEAR LIMITED WARRANTY

1. Viking warrants to the original purchaser, for a period of One (1) year, from the date of delivery, Eighteen (18) months from the date of shipment from the factory, or upon completion of Two Hundred (200) hours of operation, whichever ever comes first, the following:

That Viking will, through the selling dealer, replace or repair, at the discretion of Viking, any part or component, manufactured by Viking which is proven to the satisfaction of Viking to be defective, and which has occurred under normal use and service within the warranty period.

This writing is meant to be a complete and exclusive statement of the terms of all Viking warranties.

2. THERE ARE NO OTHER WARRANTIES EXPRESS OR IMPLIED THAT EXTEND BEYOND THE FACE OF THIS INSTRUMENT. VIKING RESTRICTS ITS WARRANTY TO REPAIR OR REPLACEMENT IN LIEU OF ALL OTHER WARRANTIES EXPRESS OR IMPLIED. VIKING SHALL NOT BE LIABLE FOR ANY INCIDENTAL, CONSEQUENTIAL OR INDIRECT DAMAGES CAUSED AS A RESULT OF ANY DEFECT IN WORKMANSHIP, REPAIR OR REPLACEMENT. SOME STATES DO NOT ALLOW LIMITATIONS ON HOW LONG AN IMPLIED WARRANTY LASTS, SO THE ABOVE LIMITATION MAY NOT APPLY TO YOU. SOME STATES DO NOT ALLOW THE EXCLUSION OR LIMITATION OF INCIDENTAL OR CONSEQUENTIAL DAMAGES, SO THE ABOVE LIMITATION OF INCIDENTAL OR CONSEQUENTIAL DAMAGES, SO THE ABOVE LIMITATION OF INCIDENTAL OR CONSEQUENTIAL DAMAGES, SO THE ABOVE LIMITATION OF EXCLUSION MAY NOT APPLY TO YOU. THIS WARRANTY GIVES YOU SPECIFIC LEGAL RIGHTS, AND YOU MAY ALSO HAVE OTHER RIGHTS WHICH VARY FROM STATE TO STATE.

3. Viking invites any purchaser to inspect the vessel before purchase, with any experts (mechanical or otherwise) to determine to the purchaser's satisfaction, the condition of the vessel prior to purchase.

4. The dealer is not the agent of Viking and Viking does not authorize the dealer, or any other person, to assume for Viking any liability in connection herewith or any liability or expenses incurred in the repairing of its product other than those expressly authorized herein. After an authorized dealer has been assigned by Viking for warranty work, reimbursement for labor costs provided by the dealer under the Viking warranty will be based upon a rate and schedule established by Viking. This reimbursement shall be through the selling dealer.

5. Viking reserves the right to improve its products through change and design or material without obligation to incorporate such change in boats of prior manufacture. Viking does not have a model year as such, and changes are incorporated in boats by the manufacturer as same are constructed from time to time. Viking does not warrant or represent that a particular boat is of a particular model year.

6. The defect must be reported to Viking in writing within Thirty (30) days of the discovery of same with the following information:

- (a) Owner's name and address;

- (b) Boat serial number (hull number);
- (c) Information as to nature of defect;
- (d) Date actually placed in service;
- (e) Accumulated hours of days of service.

All warranty notice and other necessary communications in connection with this warranty should be sent to the following address:

Viking Yacht Company  
Route 9  
On the Bass River  
New Gretna, New Jersey 08224

- 7. You may inquire regarding warranty coverage, etc., by means of the following:
  - (a) Contacting the Viking dealer from which you purchased your Viking for an inspection of the problem involved.
  - (b) Delivering your Viking to the selling dealer for an examination on the premises.
  - (c) Contact the company at the above-mentioned address.
- 8. All warranty claims for engines shall be presented directly to the engine manufacturer. Correspondence to the engine manufacturer shall include the engine serial number, date of purchase, dealer from whom purchased, accumulated hours, and description of the alleged defects. Copies of all correspondence shall be forwarded to Viking at the same time of the original transmittal of same. Viking passes on any and all warranties of products or components which are not of Viking's manufacture and any warranty provided by the manufacturer is assigned to the owner, if possible.
- 9. Viking will not be responsible for any damage to a vessel, or parts thereof, which have been subjected to abuse or neglect, faulty installation by personnel not directly employed by Viking, lack of, or improper maintenance, or failures caused by accident.
- 10. This warranty shall not apply to:
  - (a) Products or components not manufactured by Viking.
  - (b) Parts altered in any manner from original manufacture.
  - (c) Fuel consumption or performance characteristics because they are merely estimates.
  - (d) Varnishes, gelcoats, paints, fabrics, chromium plated and stainless steel finishes because of differing climatic conditions.
  - (e) Others than the first owner.
  - (f) Yachts in commercial use.
  - (g) Electronics or electronics installation.
  - (h) Canvas, enclosure or bimini installations.
  - (i) The cost of removal or reinstallation of parts or components.
  - (j) Yachts sold and registered outside the legal jurisdiction of the United States.